

# PROPOSAL FOR A JOINT PUBLIC POLICY BA/MPP FIVE-YEAR COMBINED-DEGREE PROGRAM

April 2019

Proposed by the Faculty of the School of Public Policy  
University of California, Riverside

## 1 Introduction

The School of Public Policy is proposing a new degree program that will allow students to obtain both BA and MPP degrees through an integrated five-year plan of study. The proposed program is within the framework established by UCR's Committee on Educational Policy and the UCR Graduate Council in 2007. This program prepares students for professional policy careers as well as for pursuing subsequent doctoral degrees in relevant disciplines. The Joint BA+MPP Program is open to UCR public policy undergraduates only (including double majors who have declared public policy as one of their majors).

Participation in the joint degree program is initiated through an application for admission prior to the end of the student's junior year. Students interested in this program should approach the student affairs advisors in SPP during their junior year. This would allow them to begin taking MPP courses during their senior year and planning for their internship at the end of their senior year and a capstone project during their fifth and final year in the program. The Graduate Division does not provide financial support for students enrolled in this program, although the School of Public Policy may have some scholarships, including teaching assistantships, for strong students.

Motivation: Quoting from the document Establishment of Combined Programs at UCR, "... combined programs can better attract top high school graduates, transfer students, and returning students, especially those interested in advanced degrees. Thus, UCR departments can expect a higher proportion of good undergraduates. Combined program students will be more inclined to stay at UCR for their Master's studies instead of applying to other institutions. Thus, UCR departments can better retain these students."<sup>1</sup> UC has placed an increased emphasis on attracting transfer students from community colleges, and the joint BA+MPP program provides a unique opportunity for these students.

In sum, the program should attract top students into both the BA (Public Policy) and MPP programs.

Method: To make it possible to complete both degrees in five years, the combined programs can allow double-counting of up to 12 credits of coursework. The justification is that there is considerable overlap in courses between the BA (Public Policy) and the MPP programs, especially in elective policy areas, such as environmental, health, and immigration policies. Thus, students in the BA+MPP program would simply substitute the MPP elective courses in these policy areas in place of the upper-division elective courses currently offered in the BA (Public Policy) program.

Relation to existing programs. The program consists of the regular BA program in Public Policy, with MPP coursework, internship and capstone initiated during the fourth year and completed in year five. Up to 12 units of coursework can be double-counted, with the MPP elective courses being taken in lieu of BA (Public Policy) elective courses, which would allow for the (Plan II) MPP requirements to be met in a single additional year. The BA+MPP program will complement the existing two-year MPP program in the School of Public Policy, whose applicant pool is comprised mostly of students who received their undergraduate degrees elsewhere.

---

<sup>1</sup>[http://senate.ucr.edu/about/policies/establishment\\_of\\_combined\\_programs\\_at\\_ucr.pdf](http://senate.ucr.edu/about/policies/establishment_of_combined_programs_at_ucr.pdf)

As the primary motivation for the program is simply recruitment of top students, the program involves no new courses or requirements.

Interrelation with other UC institutions. The proposed program would be unique among public policy programs nationally. No such program is offered anywhere in the UC system. (Nor are we aware of any other major university in the country offering such a program.) Consequently, beyond making the respective BA (Public Policy) and MPP programs more attractive, the program does not directly compete or interrelate with other UCR or UC programs or institutions. It may indirectly recruit top students into the UCR (or other UC) social science PhD programs via the MPP program.

Department that will administer the program. The BA (Public Policy) and MPP portions of the program will be administered by the School of Public Policy, which is the unit managing both programs currently.

Timetable for development. Depending upon the pace of program approvals, we hope to have the program offered to students starting Fall 2020. Undergraduate public policy majors with junior standing in Fall 2020 could apply for admission to the combined BA+MPP program in Winter 2021 (AY 2020-21). Based on current levels of participation in the public policy BA (Public Policy) program over the past five years, we expect from 8-12 students to opt for the combined BA+MPP program each year.

Historical development of the field. There is a consistently strong demand for individuals with BA (Public Policy) and MPP degrees in government, especially local governments and specialized public agencies (working in the water, air quality, transport, and economic development areas), and among non-profit and even for-profit groups. Individuals with analytical skills, versatility with diverse research methods (both quantitative and qualitative), and policy internship experience are ideally suited for these positions and are highly sought after for their problem-solving abilities. The School of Public Policy is already heavily engaged with public agencies in Southern California – city governments, county governments, water districts, air quality boards, transportation authorities, health-care districts, school districts, and the state insurance commission, to name a few – as well as with nonprofits – community-based organizations, foundations, grassroots NGOs, and trade associations. All of these entities are looking for individuals with Master’s training and analytical policy skills. Students with a BA+MPP would be excellent candidates to fill these positions. The School’s MPP program is now already three years old, and has been growing (we admitted 22 students in Fall 2018). We feel it would be a good time to leverage interest in the MPP program within our large (existing) undergraduate public policy program and to facilitate entry of strongly-prepared undergraduate students into it.

Plan for evaluation of the program. The effectiveness of the program will be evaluated by monitoring the extent to which it increases the quality of students in the BA (Public Policy) and MPP programs. The metrics of evaluation will include GPA, graduation rates, job placement, and acceptance to advanced degree programs.

## **2. Program**

Admission Criteria. The proposed 5-year joint BA+MPP program will have two timeframes for admission, one of which is for conditional admission: 1) preliminary conditional admission as an incoming lower-division student, and 2) admission as a junior student meeting admission criteria. The School of Public Policy proposes to offer outstanding freshman the opportunity to apply for preliminary (conditional) admission into the joint BA+MPP program based on their undergraduate admission qualifications. This can serve as a recruiting tool as well as increase participation in the program. Official admittance would still require meeting the course and GPA criteria and satisfactory

progress in the undergraduate major.

*Preliminary Conditional Admission Criteria*

- Intent to enroll in the UCR BA+MPP Program
- High School GPA > 3.6
- SAT I combined score > 1950

*Official Admission Criteria*

- Enrolled in the UCR Public Policy Program
- 3.3 GPA in major (upper division classes only, minimum of 12 units to be completed by the end of junior year)
- 3.0 GPA overall (with transfer students needing to have a combined – UCR and prior institute – overall GPA of 3.0)
- The GRE requirement would be waived for admission to the BA+MPP

Joint BA+MPP Degree Program Requirements. The BA (Public Policy) program course requirements remain as currently outlined in the general catalog. Additional course and unit requirements for the BA+MPP program are outlined below and a sample program is provided.

The joint BA+MPP program will require students to do the full coursework required of the two-year MPP program during their senior and fifth years in the BA+MPP program, including the 8-unit capstone project (PBPL 289a,b) during their fifth year in the BA+MPP program. The “space” for the additional graduate coursework in their senior year will come from the BA+MPP students being able to substitute Master’s specialization area courses for some of the upper-division elective courses that BA (Public Policy) students are required to take in two of six policy specialization tracks.

During the MPP portion of this program, students must maintain a grade-point average of (both overall and in the major) of at least 3.0 for all course work, both cumulatively and for each quarter of enrollment. If the student's GPA falls below 3.0 (for either the overall or major), he/she may be dropped from the program.

Note that students enrolled in the BA+MPP program will need to successfully complete the two-quarter, 8-unit capstone team project, with both written and oral presentations, which is required of all MPP students (PBPL 289a and PBPL 289b). Students must meet with their faculty mentor throughout the winter and spring quarters of the Master’s year to discuss their capstone project and its progress. The written capstone project must be submitted by week 9 of the student’s sixth quarter in the joint BA+MPP program. Any deviation from this plan, such as a disruption in enrollment for one or more quarters, may cause the student to be dropped from the program.

Sample BA+MPP Degree Course Plan. The following table outlines a sample program for a student in the proposed joint BA+MPP program. Students will average 17 units per quarter in the BA portion of this proposed program, including two internship courses (PBPL 198I, each worth 4 units) and six occurrences of PBPL 191 (for a total of 12 units total), which is a course that requires students to attend the public policy outside-speakers seminar series and to write a critique on the seminars they attended.

<b>FIRST YEAR (48 Units Completed)</b>		
<i>FALL</i>	<i>WINTER</i>	<i>SPRING</i>
ENGL 001A	ENGL 001B	ANTH/PSYC/SOC
ECON 003	HIST 020	FINE ARTS
PHYSICAL SCIENCE	LIT/PHIL/RLST	ETST COURSE
PBPL 001	BIOLOGICAL SCIENCE	ADDITIONAL SOCIAL SCIENCE

<b>SECOND YEAR (108 Units Completed)</b>		
<i>FALL</i>	<i>WINTER</i>	<i>SPRING</i>
FOREIGN LANGUAGE	FOREIGN LANGUAGE	FOREIGN LANGUAGE
LIT/PHIL/RLST	PBPL 004	ENGL 001C or WAC Course*
PBPL 002	POSC 010 or 015	STAT 040, 048 or 100A
ADDITIONAL NAT SCI/MATH	ADDITIONAL NAT SCI/MATH	ADDITIONAL HUMANITIES
PBPL 191 (SEMINAR) (2 units)	PBPL 191 (SEMINAR) (2 units)	PBPL 198I

<b>THIRD YEAR (162 Units Completed)</b>		
<i>FALL</i>	<i>WINTER</i>	<i>SPRING</i>
FOREIGN LANGUAGE	UPPER-DIVISON MAJOR	UPPER-DIVISON MAJOR
UPPER-DIVISON MAJOR	UPPER-DIVISON MAJOR	UPPER-DIVISON MAJOR
UPPER-DIVISON MAJOR	UPPER-DIVISON MAJOR	UPPER-DIVISON MAJOR
PBPL 101	PBPL 191 (SEMINAR)	UPPER-DIVISON MAJOR
PBPL 198I		PBPL 191 (SEMINAR) (2 units)

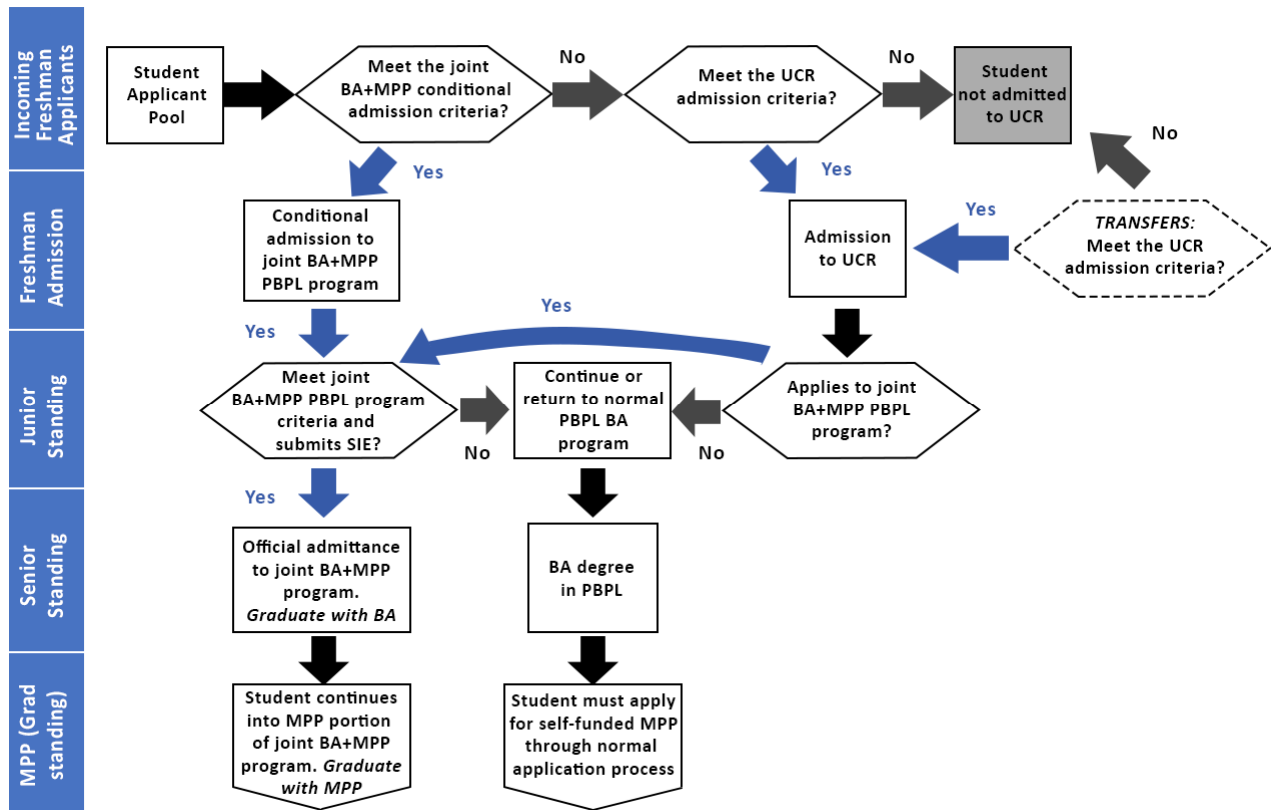
<b>FOURTH YEAR (204 Units Completed)</b>		
<i>FALL</i>	<i>WINTER</i>	<i>SPRING</i>
PBPL 200	PBPL 212	PBPL 206
PBPL 210	PBPL 214	MPP ELECTIVE
PBPL 222	PBPL 220	MPP ELECTIVE
PBPL 191 (SEMINAR) (2 units)	PBPL 191 (SEMINAR) (2 units)	PBPL 191 (SEMINAR) (2 units)

<b>FIFTH YEAR (240 Units Completed)</b>		
<i>FALL</i>	<i>WINTER</i>	<i>SPRING</i>
PBPL 202	PBPL 289A	PBPL 289B
PBPL 216	MPP ELECTIVE	MPP ELECTIVE
PBPL 298I	MPP ELECTIVE	MPP ELECTIVE

Application Details. Interested students must submit a Statement of Interest and Eligibility (SIE) before the start of their final undergraduate year but are encouraged to apply as early as possible.

Projected Flowchart of Student Applicants. The following flowchart illustrates how students may move into and out of the joint BA+MPP program in public policy. Students must maintain academic standards (i.e. GPA > 3.3 in major and 3.0 overall) or they will not be permitted to remain in the program.

Students would graduate with a BA in Public Policy after their senior year and would graduate with MPP after their year at Master's standing.



### Catalog entry

**Joint BA + MPP Program.** The School of Public Policy offers a combined five-year BA+MPP program in public policy, designed to allow successful UCR public policy BA graduates to complete the Master of Public Policy degree in one additional year. Applicants to the joint BA+MPP program should apply before the end of their junior year, provided that the student was a UCR BA (Public Policy) student with a cumulative GPA at least 3.0 overall and 3.3 in the public policy major. This must include a minimum of 12 units of upper-division PBPL courses to be completed by the end of spring quarter of the junior year (or the student's year of application). Similarly, transfer students must complete 12 units of upper-division PBPL courses. However, their combined GPA (minimum 3.0) will be calculated from their UCR and prior institution transcripts. The application to the joint BA+MPP program must include at least two recommendation letters from UCR Academic Senate faculty members, at least one of whom must be a faculty member in the School of Public Policy. Matriculation into the graduate portion of the joint degree program occurs in the fall quarter following the senior year, provided: (a) the MPP application is accepted, (b) throughout senior year, the student is an Public Policy BA major with cumulative GPA 3.0 or higher, (c) by the end of the senior year, the student completes the Public Policy BA degree requirements and receives his or her BA in Public Policy.

Incoming freshman students who are applying to the BA (Public Policy) program may simultaneously apply for preliminary admission provided they meet all the criteria established for the BA (Public

Policy) program. Preliminary conditional admission status is maintained as long as the student is a BA (Public Policy) student in good standing with a cumulative GPA of at least 3.0. Preliminarily-admitted students would still need to apply for full admission before the end of their junior year as described above.

### **3. Projected need, resource requirements, student support**

As noted in the introduction, in keeping with the framework established by the CEP and Graduate Council, this combined program is primarily a recruitment tool, intended to leverage the increasing interest in graduate education to attract top freshmen into the BA (Public Policy) program, and to attract top UC Riverside BA students into the MPP program.

In the BA program, the prospect of entering the program at year three and completing both the BA and MPP in a total of five years should attract students who are highly motivated and more likely than average to make it through the program. While we do have a number of students who choose to study Public Policy as entering freshmen, a larger proportion of our undergraduates discover the field after their first year at UC Riverside. The combined BA+MPP program will increase the visibility of the undergraduate major to entering students. It will also raise the visibility of the major to social science students who are already enrolled but might have been unaware of the prospects offered by the discipline. We expect that the opportunity of earning a joint BA+MPP in three years will be highly attractive to community college transfer students as well. Enrollment of community college students has recently become an urgent priority for the University of California. Combined with ongoing increases in admissions standards, this should increase both retention and the overall quality of the students.

In the MPP program, we anticipate growth in combined-program enrollment initially of only a few (6-8) students per year, but we anticipate significant growth in the years ahead. Similar five-year co-term programs in other disciplines at other UC campuses have been quite popular with students. Rapid growth in the proposed program would be welcome and would significantly increase overall enrollment in the MPP program. There would be no expectation of support for the participants in the combined BA+MPP program. Teaching assistant opportunities would be available to students in the combined program during their fifth year (as they are to students in the regular MPP program).

Historically, two to three students each year graduating from the MPP program have gone on to join Ph.D. programs in the social sciences at UCR and other institutions. While the School of Public Policy does not currently have a Ph.D. program, we anticipate students in the BA+MPP program could enter Ph.D. programs in such field as economics, political science or sociology, through the fall application process after receiving their MPP degree.

In short, the main effect of the program should be to increase the quality of students in the BA (Public Policy) and MPP programs, and achieve a modest increase in enrollment levels. Similarly, it should increase the employability of students produced by the BA (Public Policy) and MPP programs, and help meet the increasing demand for public policy students with graduate degrees.

Resources. Note that each student in the combined program is essentially just a regular student (in the BA program, or, in fifth year, in the MPP program), and requires the same resources as a regular student at the same level. Also, because of the highly selective nature of the admissions requirements, BA and MPP enrollments will be modestly affected, at least initially. Thus, the program requires no change in faculty, courses, or resources such as library, computing, equipment, space, etc. Likewise, the program requires no change in levels or mechanisms for student funding.

The program does not require any administrative support, as both the undergraduate and graduate programs in public policy are fully managed within SPP. The existing student services/advising staff will advise the students in the BA+MPP program. The administrative functions for admission to the MPP program are performed by a Graduate Affairs Committee; this committee will also be responsible for administering the BA+MPP program.

Finally, only to the extent that existing resources allow, BA students with "preliminary conditional admission" status will be given additional advising appropriate for MPP-bound students.

#### **4. Changes in Senate regulations**

No changes in Senate regulations are required.

**From:** [Steven G Brint](#)  
**To:** [Cherysa P Cortez](#); [Dylan Rodriguez](#); [Senate](#); [Anil B. Deolalikar](#)  
**Cc:** [Jasmine Salas](#); [Kurt Schwabe](#)  
**Subject:** Re: Combined five-year BAA-MPP degree program proposal  
**Date:** Tuesday, May 07, 2019 11:48:49 AM

---

I believe that I indicated already that the SPP Executive Committee approved this proposal with the wording change.

If not, I so indicate now.

Steve

Steven Brint  
Distinguished Professor of Sociology and Public Policy  
Director, Colleges & Universities 2000 Project  
University of California, Riverside  
[www.higher-ed2000.ucr.edu](http://www.higher-ed2000.ucr.edu)

---

**From:** Anil B. Deolalikar <[anild@ucr.edu](mailto:anild@ucr.edu)>  
**Sent:** Tuesday, May 7, 2019 11:25 AM  
**To:** Cherysa P Cortez; Dylan Rodriguez; Senate  
**Cc:** Steven G Brint; Jasmine Salas; Kurt Schwabe  
**Subject:** Combined five-year BAA-MPP degree program proposal

Dear Dylan and Cherysa:

As chair of the SPP Executive Committee, Steve Brint was supposed to share with you the proposal for a combined five-year BA/MPP degree program that was approved by the SPP faculty as well as the SPP Executive Committee. Unfortunately, what got sent to you instead was a minor rewording comment that the Executive Committee had on the proposal. The EC approved the proposal subject to this slight rewording.

You may ignore the suggested rewording memo sent earlier by Jasmine. That rewording has already been incorporated into the attached revised draft. I hope that the Senate can begin the process of obtaining feedback from appropriate committees to move this proposal forward. Thanks!

Steve, perhaps you might let Dylan and Cherysa know that the SPP Executive Committee has approved the proposal.

Thanks to everyone for their role in preparing and commenting on this proposal. We look forward to Senate feedback.

Best, Anil

Anil B. Deolalikar  
Founding Dean, School of Public Policy  
Professor of Economics  
Chair, Board of Directors, UC Global Health Institute  
  
UNIVERSITY OF CALIFORNIA | RIVERSIDE  
INTS 4133 | 900 University Ave | Riverside CA 92521  
Direct: 951.827.2310 | Mobile: 951.743.2985  
[anild@ucr.edu](mailto:anild@ucr.edu) | <http://spp.ucr.edu>

---

**From:** Jasmine Salas  
**Sent:** Monday, May 6, 2019 9:33 AM  
**To:** Senate <[senate@ucr.edu](mailto:senate@ucr.edu)>  
**Cc:** Steven G Brint <[steven.brint@ucr.edu](mailto:steven.brint@ucr.edu)>; Cherysa P Cortez <[cherysa.cortez@ucr.edu](mailto:cherysa.cortez@ucr.edu)>  
**Subject:** SPP Executive Committee Review of the BA/MPP 5-Year Proposal

Greetings,

On behalf of SPP Executive Committee Chair Steven Brint, I am forwarding the attached SPP Executive Committee Review of the BA/MPP 5-Year Combined Program proposal.

Best regards,

Jasmine



**Jasmine Salas, SHRM-CP**  
| Director of Academic Personnel & Human Resources; HRBP  
| University of California, Riverside | School of Public Policy  
| phone: (951) 827-2332 | email: [jsalas@ucr.edu](mailto:jsalas@ucr.edu) | site: [spp.ucr.edu](http://spp.ucr.edu)  
| address: INTS 4133 | 900 University Ave | Riverside, CA 92521

Follow and engage with us:





May 1, 2019

TO: Dylan Rodriguez, Chair  
Riverside Division

FR: Steven Brint, Chair  
SPP Executive Committee

RE: Proposal for a joint Public Policy BA/MPP five-year combined program

---

The SPP Executive Committee reviewed the proposal and approves it with one change: On page one, the proposal states, “Participation in the joint degree program is initiated through an application for admission prior to the students’ junior year. This sentence should read “prior to the end of the students’ junior year” so that the statement is consistent with the rest of the proposal.