

**COMMITTEE ON PREPARATORY EDUCATION  
REPORT TO THE RIVERSIDE DIVISION  
DECEMBER 1, 2020**

To be received and placed on file:

Report on the Entry-Level Writing Requirement: 2019-2020

In the fall of 2019, 61% of UCR’s entering freshmen had satisfied the Entry-Level Writing Requirement before registering as full-time students. Many students passed the AWPE or the AP English exam, or took summer school.<sup>1</sup> A large number of freshmen (33% in Fall 2019) came to UCR with AP credits that placed them in English 1B or 1C. Another 13% of the entering freshmen satisfied the ELWR by passing the Analytical Writing Placement Exam. The remaining 15% of entering freshmen satisfied the ELWR by way of the SAT (6%), the ACT (2%), an International Baccalaureate English exam (1%), earning transferable credit for English 1A from another institution (4%), or passing English 4 during the Highlander Early Start Academy (2%).

The remaining 39% placed in Entry-Level Writing courses. The great majority made good progress once they arrived at UCR.

**2019 ELWR Students: Initial Placement**

Colleges	English 1PA	English 4	Basic Writing 1 & 3 (ESL)	Total ELWR Students
BCOE	41	106	23	170
CNAS	104	369	63	536
CHASS	85	780	199	1064
GSOE	2	40	6	48
SPP	1	11	0	12
<b>TOTAL</b>	<b>233</b>	<b>1306</b>	<b>291</b>	<b>1830</b>

**Of the 1306 students who placed into English Writing 4 in the fall, no students were required to leave UCR at the end of the year solely for failure to satisfy the requirement. Responding to the pandemic, the associate deans in several colleges granted petitions for additional time to satisfy the ELWR. Of the 83 students initially placed in English 4 who did not satisfy the ELWR by the spring 2020 quarter, 35 students were academically dismissed or left the university due to impending dismissal because of their overall academic records. Four students withdrew voluntarily from the university. Eleven students**

---

<sup>1</sup> In multiple AWPE testings during the 2019-2020 academic year, the pass rate for the 2,901 UCR students who took the exam averaged 28%, matching a record low. A major reason for this decline is that the test pool is increasingly made up of students who have not taken, or have not passed, an AP exam that would have enabled them to pass the requirement. An opposite trend is the growing number of students entering UCR with passing AP scores. This latter group is less likely to take the AWPE and be counted in these statistics.

A significant number of the students who do not pass the AWPE manage to pass the Entry-Level requirement before they matriculate. They satisfy the ELWR through passing various alternatives approved by the Systemwide Senate. (More details follow in this report.) As a result, the overall ELWR pass rate for 2019-2020 was good. The number is the most significant measure of UCR students’ pre-matriculation preparation in composition.

satisfied the ELWR during the summer 2020 quarter. Thirty-three students have time remaining in the ELWR time-limit because of the time limit extension.

There were 233 additional students who placed into English Writing 4 in the fall and were invited to participate in English 1PA (Beginning Composition: Intensive). Of this group, 183 students took and passed English 1PA to satisfy the ELWR and the ENGL001A requirement in the fall quarter. Forty-two students satisfied the ELWR by passing English 4, and one student has been granted an additional quarter to satisfy the ELWR by passing English 4. The remaining 7 students left the university before completing the ELWR.

A total of 291 entering freshmen initially placed in ESL classes. Since they were “off the clock” for up to their first three quarters of residence, no students among those placed in ESL classes in the fall of 2019 were required to leave UCR solely for failure to satisfy the ELWR. 136 ESL students satisfied the ELWR during their first year of residence. Of the remaining 155 ESL students, 17 satisfied the requirement during the summer of 2020. Thirteen students were academically dismissed or left the university due to impending dismissal because of their overall academic records. Ten students withdrew voluntarily from the university. The remaining 115 students continue to make progress in satisfying the ELWR. (They will have up to two years to satisfy the ELWR.)

### Update on Fall 2018 Basic Writing 1 and 3 Students

We have a more complete picture of BW 1 and BW3 students’ progress when we look at the two-year records of students who placed in an ESL course when they entered UCR in the fall of **2018**. Of the 290 entering freshmen who were placed in ESL classes that year, 152 students satisfied the ELWR during their first year of residence. 81 students satisfied the ELWR during their second year of residence. Five students satisfied during the summer 2020 quarter. Of the remaining 52 ESL students, 25 students were academically dismissed or left the university due to impending dismissal on the basis of their overall records. 14 students withdrew from the university. **Similar to the 2019 English 4 cohort, no students in the ESL group that started in Fall 2018 were eventually required to leave UCR solely for failure to satisfy the ELWR.** Thirteen students have time remaining in the ELWR time-limit because of the time limit extension.

In previous years, almost half of the ELWR-lapsed students were able to complete the requirement through UCRX and be re-admitted to UCR. We expect a similar result for any students who eventually are lapsed for failure to satisfy the ELWR within the allotted time limit.

### 2018 Basic Writing 1 & 3 (ESL) Admits Not Satisfying ELWR (listed according to initial placement)

Colleges	Total Basic Writing 1 & 3 (ESL) Students	Total BSWT 1 & 3 (ESL) Students; ELWR not satisfied	Academically Dismissed or Withdrew	Withdrew (in good standing)	ELWR Lapse	ELWR Lapse - Readmitted	Time Remains
BCOE	15	1	1	0	0	0	0
CNAS	83	11	3	5	0	0	3
CHASS	179	40	21	9	0	0	10
GSOE	11	0	0	0	0	0	0
SPP	2	0	0	0	0	0	0
<b>TOTAL</b>	<b>290</b>	<b>52</b>	<b>25</b>	<b>14</b>	<b>0</b>	<b>0</b>	<b>13</b>

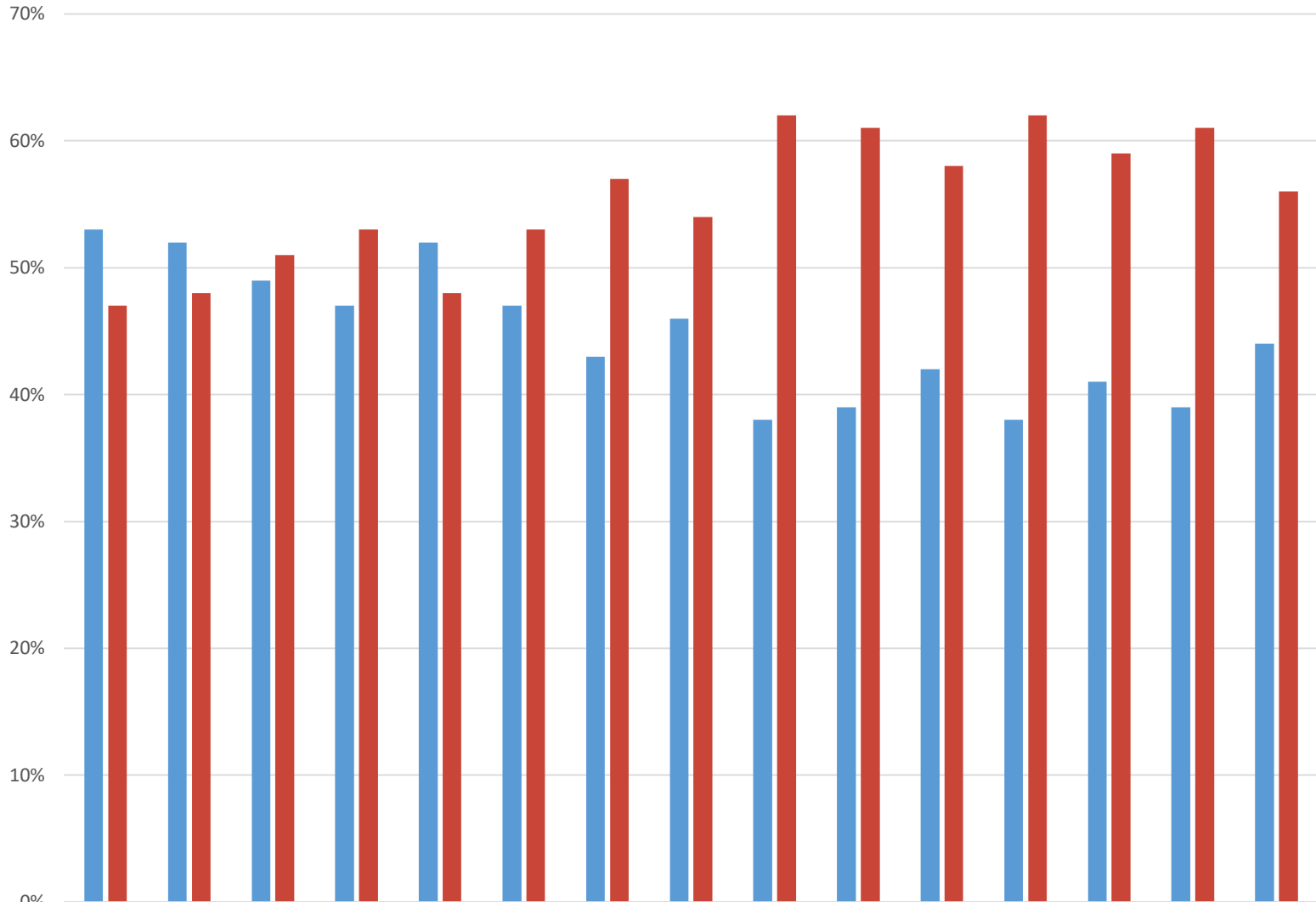
**IN PROGRESS: 2019 Admits Not Satisfying ELWR by end of Spring 2020 (listed according to initial placement)**

Colleges	Total ELWR Students	ELWR Students Not Satisfying ELWR by end of Spring 2020	English 1PA; ELWR not satisfied	English 4; ELWR not satisfied	BSWT 1 & 3 (ESL); ELWR not satisfied
BCOE	170	14	2	3	9
CNAS	536	51	1	23	27
CHASS	1064	176	5	54	117
GSOE	48	5	0	3	2
SPP	12	0	0	0	0
<b>TOTAL</b>	<b>1830</b>	<b>246</b>	<b>8</b>	<b>83</b>	<b>155</b>

Colleges	Total 2019 English 4/1PA Students	2019 ENGL 4/1PA Students; ELWR not satisfied by 20S	Satisfied ELWR during 20U	Academically Dismissed or Withdrew	Withdrew (in good standing)	ELWR Lapse	Time Remains
BCOE	147	5	0	4	1	0	0
CNAS	473	24	6	14	0	0	4
CHASS	865	59	5	22	3	0	29
GSOE	42	3	0	1	1	0	1
SPP	12	0	0	0	0	0	0
<b>TOTAL</b>	<b>1539</b>	<b>91</b>	<b>11</b>	<b>41</b>	<b>5</b>	<b>0</b>	<b>34</b>

Colleges	Total 2019 Basic Writing 1 & 3 (ESL) Students	2019 BSWT 1 & 3 (ESL) Students; ELWR not satisfied by 20S	Satisfied ELWR during 20U	Academically Dismissed or Withdrew	Withdrew (in good standing)	ELWR Lapse	Time Remains
BCOE	23	9	1	1	0	0	7
CNAS	63	27	2	3	0	0	22
CHASS	199	117	14	9	10	0	84
GSOE	6	2	0	0	0	0	2
SPP	0	0	0	0	0	0	0
<b>TOTAL</b>	<b>291</b>	<b>155</b>	<b>17</b>	<b>13</b>	<b>10</b>	<b>0</b>	<b>115</b>

### UCR ELWR Status of New Freshmen

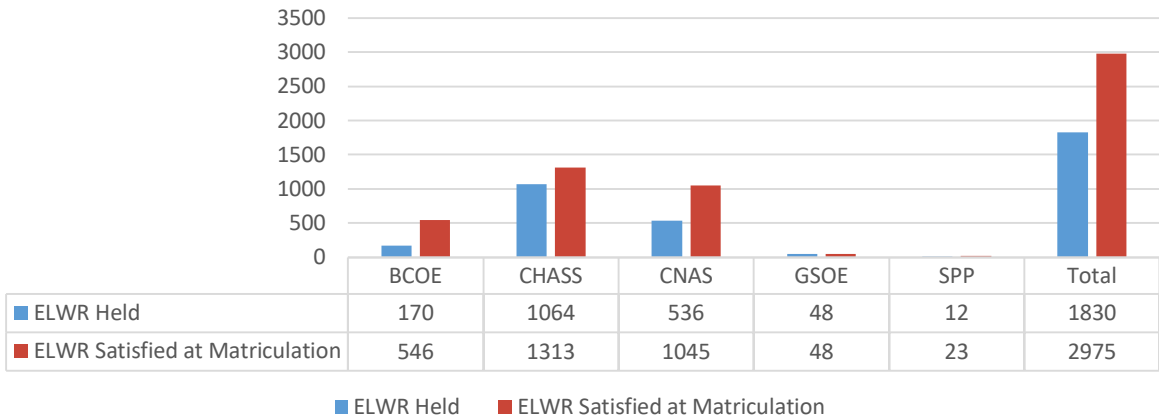


■ ELWR Held	2006	2007	2008	2009	2010	2011	2012	2013	2014	2015	2016	2017	2018	2019	2020
■ ELWR Satisfied	53%	52%	49%	47%	52%	47%	43%	46%	38%	39%	42%	38%	41%	39%	44%
	47%	48%	51%	53%	48%	53%	57%	54%	62%	61%	58%	62%	59%	61%	56%

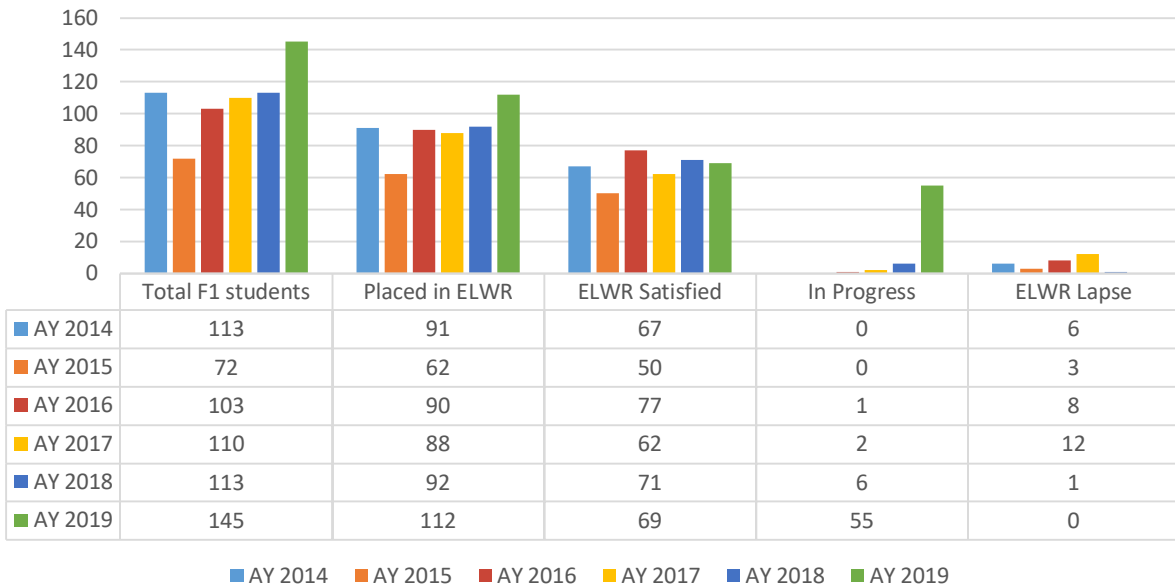
■ ELWR Held ■ ELWR Satisfied

## ELWR Status by College

2019-2020



## F1 Visa



	Total F1 students	Placed in ELWR	ELWR Satisfied	% of F1 ELWR currently satisfied	In Progress	Academically Dismissed or Withdrew	Withdrew (in good standing)	ELWR Lapse
AY 2014	113	91	67	74%	0	10	8	6
AY 2015	72	62	50	81%	0	2	6	3
AY 2016	103	90	77	86%	1	9	0	8
AY 2017	110*	88*	62	70%	2	10	2	12
AY 2018	113	92	71	77%	6	12	2	1
AY 2019	145	112	69	47%	55	11	10	0

\*Three F1 students left the university before receiving an official placement.